

Anti-H_B7H4(VTCN1) hIgG1 Antibody(FPA150)

产品信息

GM-24028AB-10	10 µg
GM-24028AB-100	100 µg
GM-24028AB-1000	1 mg

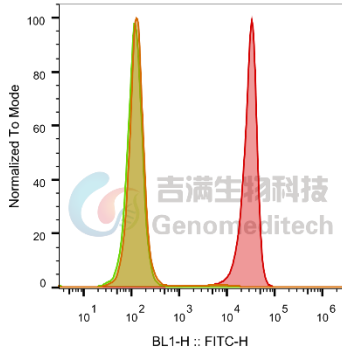
抗体信息

Species Reactivity	Human; Cynomolgus
Clone	FPA150
Source/Isotype	Monoclonal human IgG1, κ
Application	Flow cytometry
Specificity	Detects B7H4(VTCN1).
Gene	B7H4(VTCN1)
Other Names	B7-H4, B7S1, B7X, B7h.5, PRO1291
Gene ID	79679(human); 102117075(cynomolgus)
Background	B7H4 encodes a protein belonging to the B7 costimulatory protein family. Proteins in this family are present on the surface of antigen-presenting cells and interact with ligand bound to receptors on the surface of T cells. Studies have shown that high levels of the encoded protein have been correlated with tumor progression.
Storage	Store at 2-8°C short term (1-2 weeks).Store at ≤ -20°C long term.Avoid repeated freeze-thaw.
Formulation	Phosphate-buffered solution, pH 7.2.

Data Examples

Flow cytometry

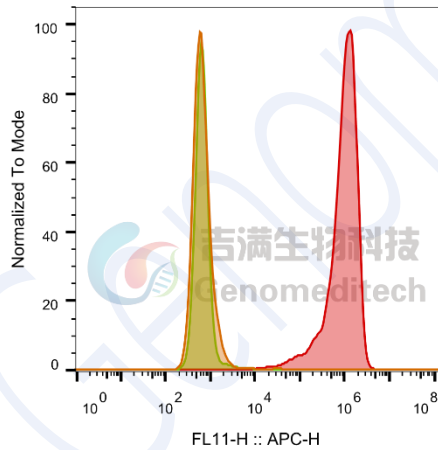
The recommended usage range is 0.5-4 μg per test. H_VTCN1(B7H4) CHO-K1 Cell Line (Catalog # GM-C09625) was stained with Anti-H_B7H4(VTCN1) hlgG1 Antibody (Catalog # GM-24028AB) or isotype control antibody, followed by anti-Human IgG FITC-conjugated Secondary Antibody.



SampleID	Geometric Mean : BL1-H
CHO-K1 anti-H_VTCN1(B7H4)+FITC-2nd Ab	146
CHO-K1 H_VTCN1(B7H4) H_IgG+FITC-2nd Ab	120
CHO-K1 H_VTCN1(B7H4) anti-H_VTCN1(B7H4)+FITC-2nd Ab	27912

Flow cytometry

The recommended usage range is 0.5-4 μg per test. Cynomolgus_VTCN1(B7H4) CHO-K1 Cell Line (Catalog # GM-C25394) was stained with Anti-H_B7H4(VTCN1) hlgG1 Antibody (Catalog # GM-24028AB) or isotype control antibody, followed by anti-Human IgG APC-conjugated Secondary Antibody.



SampleID	Geometric Mean : FL11-H
CHO-K1 anti-VTCN1+APC-2nd Ab	698
CHO-K1 Cyno_VTCN1 H_IgG+APC-2nd Ab	701
CHO-K1 Cyno_VTCN1 anti-VTCN1+APC-2nd Ab	8.62E5

Fig. FACS